

Home of Your Thermal Cyclers Biometra TSuite Software



Biometra TSuite Software

Comfortably manage and monitor all Biometra thermal cyclers from your desk.

The Biometra TSuite thermal cycler management software gives you various possibilities to control and monitor your networked thermal cyclers from a computer. In the dashboard display, you can keep track of all important, current events and access active thermal cyclers directly. Through other windows, you can access detailed information on individual devices, programs, documentation files and general configuration options.

Benefit from many advantages in your everyday laboratory operations:

- Suitable for all current models: Biometra TOne, Biometra TAdvanced, Biometra TRIO, Biometra TRobot II
- Unlimited number of devices: Connect as many of your Biometra thermal cyclers as you want.
- Flexible usage: Choose between a mobile single license or a multiple network license.
- Compatible with existing devices: After a simple firmware update, you can use its full functionality.



All Functions at a Glance

Quick and clear: Benefit from intuitive design, user-friendly device management and live monitoring.

The design of the Biometra TSuite software enables you to quickly switch to the immediate operation of individual thermal cyclers within a network. You can also access devices or documentation-specific details via the menu bar from the start screen.

The number of addressable devices is almost unlimited – the software can manage up to 1,000 devices. The combination of symbols, color coding and thematically arranged information enables the easy tracking of data at a glance.

Key functions:

- Create, edit, save, copy, and transfer programs
- Start, pause, stop programs
- Monitor running programs
- View, save, and export documentation data
- User administration of devices
- Opening and closing the lid of automated thermal cycler Biometra TRobot II

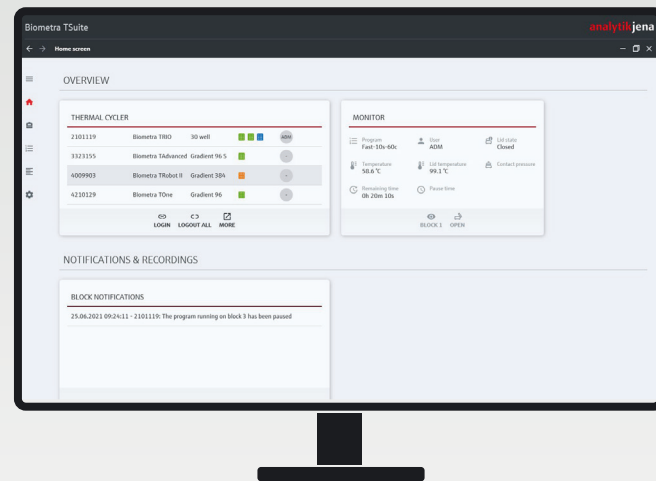


Dashboard and Menu Bar

01

After the software is launched, all available thermal cyclers within the network are displayed in the overview, together with their respective status. Should you already be logged in a device as a user, you can see

more detailed information, such as the current program, temperatures and remaining time, in the control field of the dashboard. Depending on the selected functions and statuses of the devices, tiles with information related to the particular context will automatically be displayed on the dashboard. This also includes device-specific notifications or the display of a potentially running recording of an extended run-log data file. This way you can immediately see whether important events occurred and whether the selected program is running error-free.

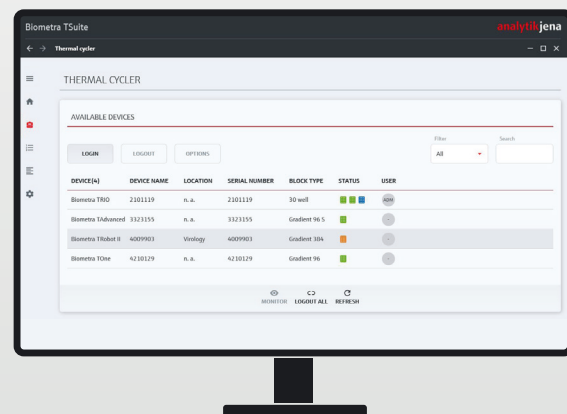


Accessing topic areas through the side menu

Areas are arranged by topic and can be accessed through the side menu:

- Thermal cyclers
- Programs
- Documentation
- Settings

Each area includes overviews with details that are sorted thematically in pages. To simplify intuitive orientation, the software employs standard symbols and functions that are highlighted in colors to indicate that they are active or should be selected in the next step.



Menu "Thermal Cycler"

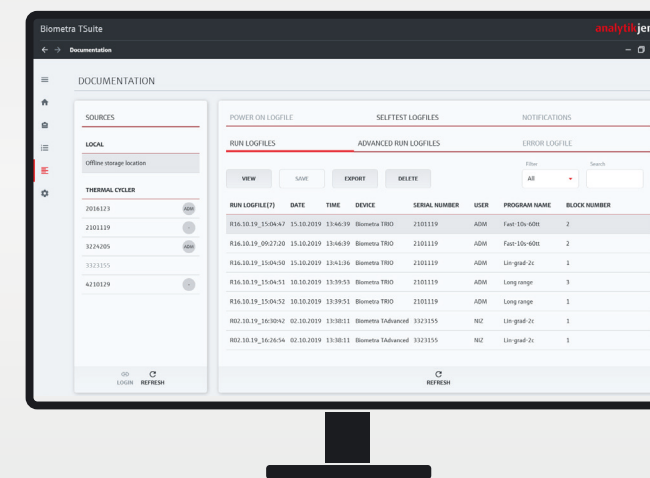
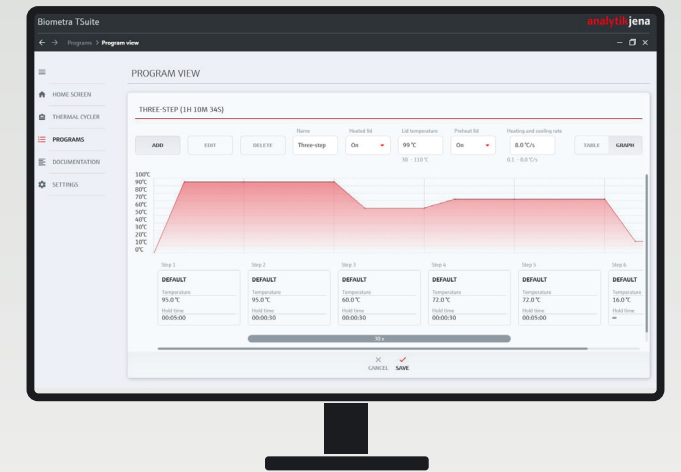
02

All information on individual devices can be accessed in this area. After selecting a device, you can view information on the device using the "Options" function and, depending on your administrator rights, manage users. Backup and additional device-specific service functions are also listed here. This includes the launch of a comprehensive device self-test.

Menu "Programs"

03

Preparation, viewing, and transfer of programs takes place here. With the program view, there are two options to choose from: table view or a graphic display with a temperature profile. You can directly edit individual parameters in these views. All parameters of a program including gradient programming are supported by the display of permissible data areas. Possible incorrect entries are highlighted to ensure that the programming is free from error. Since each device is individually recognized, the correct parameters for your model are always superimposed.



Menu "Documentation"

04

Biometra thermal cyclers generate different documentation data that can be viewed, saved and exported here:

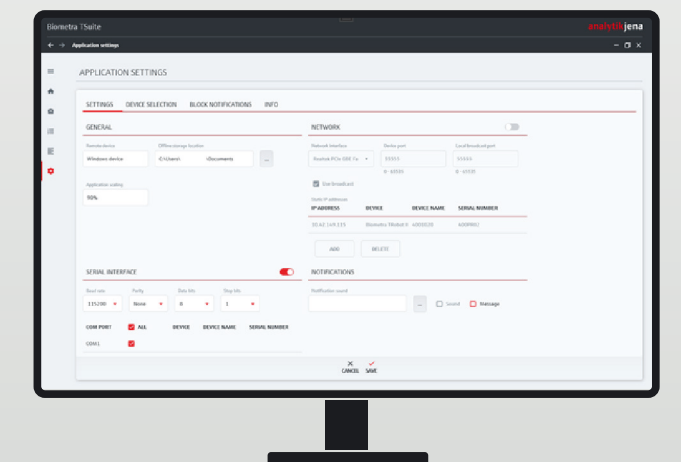
- Power on log
- Run log
- Advanced run log
- Error log
- Detailed self-test
- Service info

The encrypted data transfer guarantees the integrity and safety of the data. Various log files enable GMP-compliant use and, in the event of a malfunction, help locate the cause of the error prior to a service visit.

Menu "Application Settings"

05

Here you can define higher-level settings such as storage paths, interfaces, and notification settings.



Watch the video tutorial on all the important functions of the software.

Watch the video

Specifications

Biometra TSuite Software

Properties	Description
Device compatibility	Biometra TOne, Biometra TAdvanced, Biometra TRIO, Biometra TRobot II
Number of devices that can be managed by the software	Max. 1,000 devices
Number of detailed run log files recorded simultaneously*	10
Language	German, English, Chinese
Required operating system	Windows 8.1 and higher
License requirement	Yes, as individual license or multiple network license with USB dongle. The Biometra TRobot II already includes an individual license.

*The limitation only applies to the optional "detailed" run log file with temperature recording every second. All other log files are automatically recorded indefinitely.

Order Information

Biometra TSuite Software

Order Number	Description
846-070-001	Biometra TSuite individual license with one USB dongle
846-070-002	Biometra TSuite multiple network license with one USB dongle, 5 licenses
846-070-003	Biometra TSuite multiple network license with one USB dongle, 20 licenses
846-070-004	Biometra TSuite multiple network license with one USB dongle, 50 licenses

Discover more



Company Headquarters

Analytik Jena GmbH
Konrad-Zuse-Strasse 1
07745 Jena · Germany

Phone: +49 3641 77 70
Fax: +49 3641 77 9279
info@analytik-jena.com
www.analytik-jena.com

Images: Analytik Jena GmbH
Subject to changes in design, scope of delivery, and technical developments.

Version 1.0 - en - 10/2022
888-09-20-16-2
© Analytik Jena GmbH